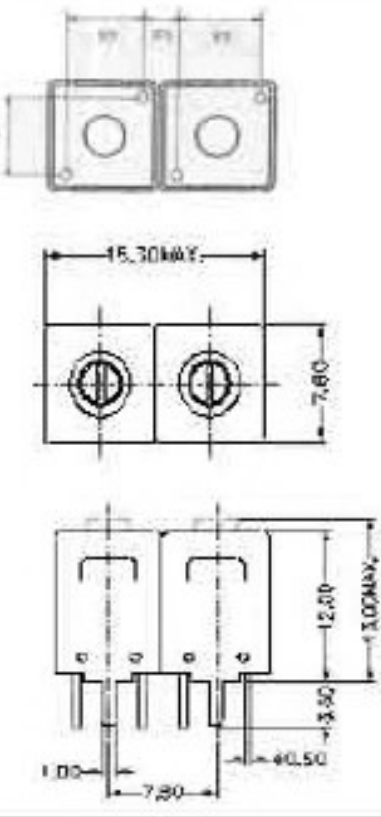
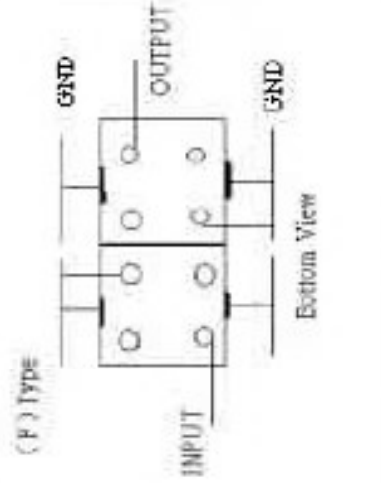
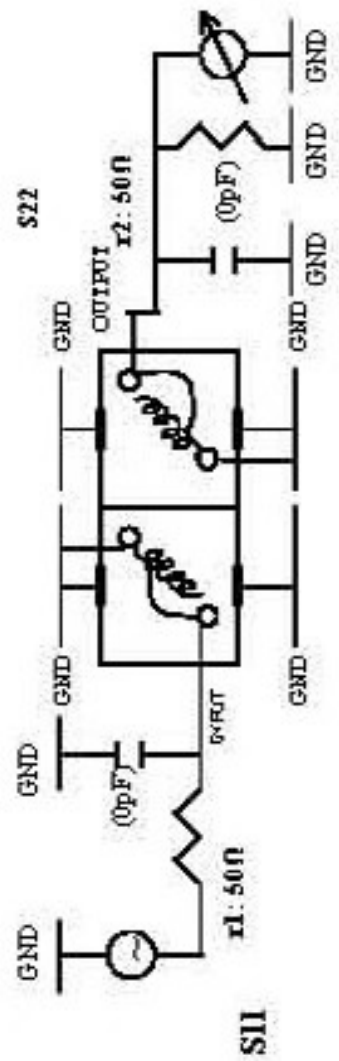


Customer Name	Temwell's Part No.	TD6747F-460M
Approval No./dated	Acceptable Specify Fo Range	456~515 MHz
Work Instruction No.	Date	Aug.23.2006
(1) Pin Position	(2) Size Diagram	



Item	Specify	Performance
Center Freq.(Fo) +/- 0.5 %	460 MHz	460 MHz
Tunable Range	460±5 MHz	460±5 MHz
Insertion Loss	Typ. 2.0 dB	1.21 dB
-3 dB Bandwidth	Fo - 50 MHz	Typ. 20 MHz
	Fo + 50 MHz	Typ. 27 MHz
	Fo - ( )MHz	Typ. 17 dBc
	Fo +( )MHz	Typ. 17 dBc
Return Loss	Typ. dBc	21 dBc
Ripple	Typ. dBc	21 dBc
Impedance	Min. 12 dB	25.9 dB
(4) Torque for Tuning Screw	< 1 dB	
(5) Temperature Condition:	In / Out : 50 Ω	In / Out : 50 Ω
Operating Temperature	> 100gf · cm	
Storage Temperature		
Input Power		

(7) Measuring Circuit: \* Easy to match Impedance 50Ω by parallel with about (0) pF.



(Bottom View)

Approval	Supervisor	Designer	Aperture size
C.Y.Chang	C.S.Chang	W.W.Wang	7H2(4*6.5)F 7H046LB4 聚 3
TEMWELL CORPORATION			