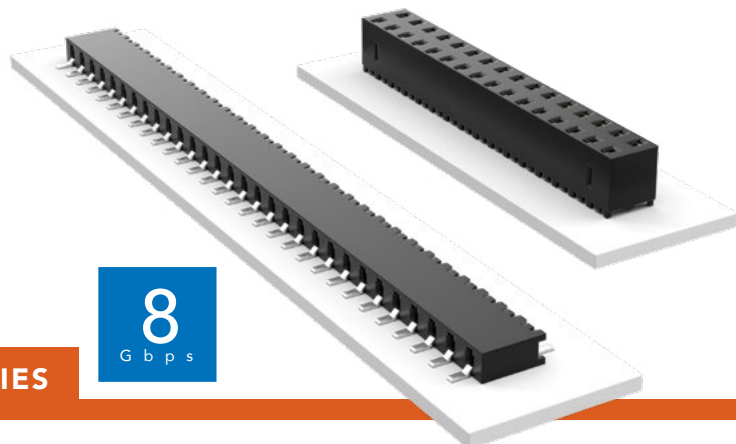


# TIGER CLAW™ SOCKET STRIP

(2.00 mm) .0787" PITCH • MMS SERIES



## MMS

**Board Mates:**  
TMMH, TMM, MTMM, MMT,  
TW, LTMM, ZLTMM, TSH

**Cable Mates:**  
TCMD

## SPECIFICATIONS

### Insulator Material:

Black LCP

### Contact Material:

Phosphor Bronze

### Plating:

Sn or Au over

50 μm (1.27 μm) Ni

### Current Rating (MMS/TMM):

3.9 A per pin

(2 pins powered)

### Operating Temp Range:

-55 °C to +125 °C with Gold

-55 °C to +105 °C with Tin

### Insertion Depth:

DH = (2.13 mm) .084" to

(2.79 mm) .110",

SH = (2.13 mm) .084" minimum or pass-through

Top Entry DV/SV =

(2.13 mm) .084" to

(4.32 mm) .170"

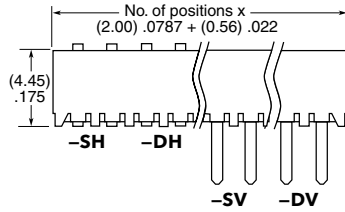
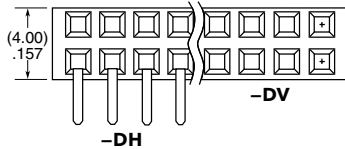
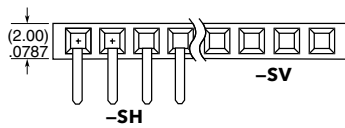
Bottom Entry DV/SV =

(4.27 mm) .168" minimum

(Plus board)



02 thru 40



**-F**  
= Gold flash on contact,  
Matte Tin on tail

**-L**  
= 10 μm (0.25 μm)  
Gold contact,  
Matte Tin on tail

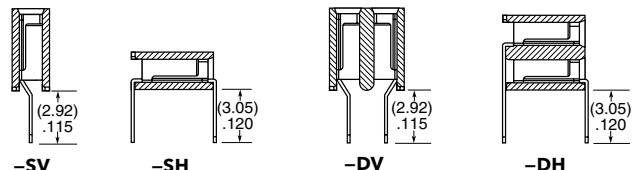
**-SV**  
= Single  
Vertical

**-SH**  
= Single  
Horizontal

**-DV**  
= Double  
Vertical

**-DH**  
= Double  
Horizontal

**-“XX”**  
= Polarized  
Position



## PROCESSING

### Lead-Free Solderable:

Yes

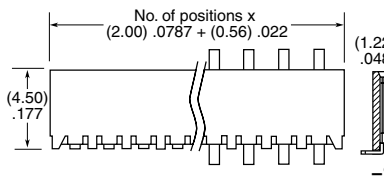
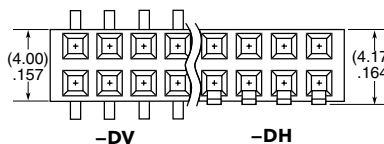
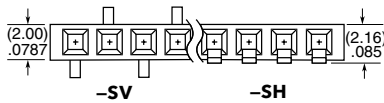
### SMT Lead Coplanarity:

(0.15 mm) .006" max\*

\*(.004" stencil solution may be available; contact IPG@samtec.com)



02 thru 40



**-F**  
= Gold flash on contact,  
Matte Tin on tail

**-L**  
= 10 μm (0.25 μm)  
Gold contact,  
Matte Tin on tail

**-SV**  
= Single  
Vertical

**-SH**  
= Single  
Horizontal

**-DV**  
= Double  
Vertical

**-DH**  
= Double  
Horizontal

**-“XX”**  
= Polarized Position

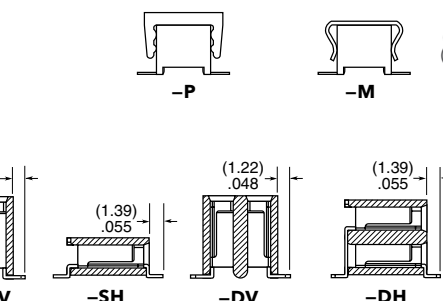
**-K**  
= (5.50 mm) .217" DIA  
Polyimide Film  
Pick & Place Pad  
(-SV & -DV only)  
(-SV = 3 positions min.)  
(-DV = 4 positions min.)

**-M**  
= Metal Pick & Place Pad  
(4 positions min.)  
(-DV only)

**-P**  
= Plastic Pick & Place Pad  
(4 positions min., -SV only)  
(5 positions min., -DV only)

**-TR**  
= Tape & Reel

**-FR**  
= Full Reel  
Tape & Reel  
(must order max.  
quantity per reel;  
contact Samtec for  
quantity breaks)



## ALSO AVAILABLE

MOQ Required

Alignment Pin (-DV only)  
Locking clips and Through-hole  
pass-through options  
Other platings

### Note:

Some lengths, styles and  
options are non-standard,  
non-returnable.

# Mouser Electronics

Authorized Distributor

Click to View Pricing, Inventory, Delivery & Lifecycle Information:

## Samtec:

[MMS-113-01-L-DH](#) [MMS-108-01-L-DH](#) [MMS-120-02-L-DV](#) [MMS-104-01-L-DV](#) [MMS-104-02-L-DH](#) [MMS-108-01-L-DV](#) [MMS-125-01-L-DV](#) [MMS-120-02-L-DH](#) [MMS-108-01-L-SV](#) [MMS-103-02-L-SV](#) [MMS-112-02-L-SV](#) [MMS-105-01-L-DH](#) [MMS-105-02-L-SV](#) [MMS-110-01-L-DV](#) [MMS-110-01-L-SV](#) [MMS-103-01-L-DV](#) [MMS-117-01-L-DV](#) [MMS-109-02-L-SV](#) [MMS-105-01-L-SV](#) [MMS-113-01-L-DV](#) [MMS-117-02-L-DV](#) [MMS-106-02-L-DV](#) [MMS-113-02-L-DV-K](#) [MMS-140-01-L-DV](#) [MMS-110-02-L-DV-A](#) [MMS-104-01-L-SV](#) [MMS-110-02-L-SV](#) [MMS-106-02-L-SH-TR](#) [MMS-105-01-L-DV](#) [MMS-110-02-L-DV](#) [MMS-111-01-L-DV](#) [MMS-102-02-L-SV](#) [MMS-132-02-L-DV](#) [MMS-125-01-L-DH](#) [MMS-111-01-L-DH](#) [MMS-108-02-L-DH](#) [MMS-109-02-L-DV-K-TR](#) [MMS-110-01-LM-SV](#) [MMS-105-02-L-DV-K-TR](#) [MMS-116-02-L-DV](#) [MMS-124-02-L-DV-M](#) [MMS-107-01-L-DH](#) [MMS-105-02-LM-SV](#) [MMS-104-01-F-DV](#) [MMS-109-02-L-DV-P](#) [MMS-112-01-L-SV](#) [MMS-111-02-L-DV-M](#) [MMS-132-01-L-SV](#) [MMS-105-01-LM-DV](#) [MMS-110-02-LM-DV-K](#) [MMS-108-02-L-DV-TR](#) [MMS-117-01-LM-DV](#) [MMS-106-02-L-DV-TR](#) [MMS-107-02-L-SV](#) [MMS-105-02-L-DH](#) [MMS-104-02-L-DV](#) [MMS-120-01-L-DH](#) [MMS-107-01-L-SH](#) [MMS-112-02-L-SV-P-TR](#) [MMS-106-01-F-DV](#) [MMS-106-02-L-DV-K](#) [MMS-113-01-L-SV](#) [MMS-107-02-L-DH](#) [MMS-120-01-L-SV](#) [MMS-109-01-L-DV](#) [MMS-106-01-LM-SH](#) [MMS-103-01-F-DV](#) [MMS-106-02-L-SV](#) [MMS-111-02-L-DV](#) [MMS-115-02-F-DV](#) [MMS-125-01-L-SV](#) [MMS-105-02-L-DV-TR](#) [MMS-112-02-L-DV-K-TR](#) [MMS-122-01-L-DV](#) [MMS-113-02-L-DV](#) [MMS-119-02-LM-SV](#) [MMS-106-01-L-SV](#) [MMS-107-02-L-DV-K](#) [MMS-112-02-L-DV-P](#) [MMS-114-02-L-DV](#) [MMS-124-01-L-SV](#) [MMS-110-01-F-SV](#) [MMS-125-01-F-DV](#) [MMS-102-01-L-DV](#) [MMS-104-01-F-SV](#) [MMS-108-02-L-DV-K](#) [MMS-113-01-LM-DV](#) [MMS-106-02-L-SH](#) [MMS-116-01-L-DV](#) [MMS-104-01-LM-SV](#) [MMS-116-01-L-SV](#) [MMS-105-02-F-DV](#) [MMS-114-01-L-DV](#) [MMS-140-02-L-SV](#) [MMS-102-01-L-DH](#) [MMS-106-01-L-DV](#) [MMS-110-02-L-SV-K-TR](#) [MMS-120-01-L-DV](#) [MMS-130-02-L-DV](#) [MMS-104-02-F-SV](#)