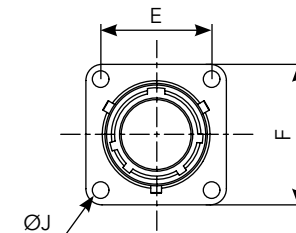
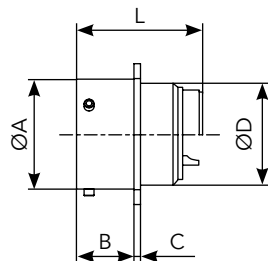


Environmental connectors

Square flange receptacle not accepting backshell

Cross reference

02 E	HE 301 B 02 E
	MS 3112 E
	VG 95328 H
02 R	HE 301 B 02 R
	MS 3122 E
	VG 95328 C

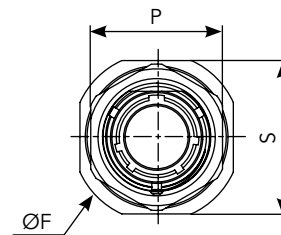
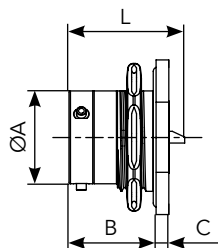


Shell size	Part numbers		L max		A	B max	C max	D max	E	F max	J
	solder contacts	crimp contacts	solder	crimp							
8	851 02 E 8.. P _S . 50..	851 02 R 8.. P _S . 50..	25.18	32.35	12.03	11.70	1.32	10.84	15.09	20.99	3.13
10	851 02 E 10.. P _S . 50..	851 02 R 10.. P _S . 50..	25.10	32.35	15.01	11.70	1.32	13.99	18.26	24.19	3.13
12	851 02 E 12.. P _S . 50..	851 02 R 12.. P _S . 50..	25.10	32.35	19.07	11.70	1.32	17.37	20.62	26.54	3.13
14	851 02 E 14.. P _S . 50..	851 02 R 14.. P _S . 50..	25.10	32.35	22.25	11.70	1.32	20.57	23.00	28.89	3.13
16	851 02 E 16.. P _S . 50..	851 02 R 16.. P _S . 50..	25.10	32.35	25.42	11.70	1.32	23.72	24.61	31.29	3.13
18	851 02 E 18.. P _S . 50..	851 02 R 18.. P _S . 50..	25.10	32.35	28.60	11.70	1.32	26.69	26.97	33.69	3.13
20	851 02 E 20.. P _S . 50..	851 02 R 20.. P _S . 50..	26.67	33.95	31.77	14.35	2.15	29.89	29.36	36.89	3.13
22	851 02 E 22.. P _S . 50..	851 02 R 22.. P _S . 50..	26.67	33.95	34.95	14.35	2.15	33.04	31.75	39.99	3.13
24	851 02 E 24.. P _S . 50..	851 02 R 24.. P _S . 50..	26.67	33.95	38.12	15.20	2.15	36.24	34.92	43.15	3.81

Jam nut receptacle not accepting backshell

Cross reference

07 A	HE 301 B 07 A
------	---------------



Shell size	Part numbers		L max		A	B max	C max	F max	P max	S max
	solder contacts	crimp contacts	solder	crimp						
8	851 07 A 8.. P _S . 50..	-	25.18	-	12.03	17.90	2.64	26.94	19.29	23.94
10	851 07 A 10.. P _S . 50..	-	25.10	-	15.01	17.90	2.64	30.14	22.38	26.94
12	851 07 A 12.. P _S . 50..	-	25.10	-	19.07	17.90	2.64	34.94	27.13	31.74
14	851 07 A 14.. P _S . 50..	-	25.10	-	22.25	17.90	2.64	38.04	30.33	34.94
16	851 07 A 16.. P _S . 50..	-	25.10	-	25.42	17.90	2.64	41.24	33.48	38.24
18	851 07 A 18.. P _S . 50..	-	25.10	-	28.60	17.90	2.64	44.44	36.68	41.34
20	851 07 A 20.. P _S . 50..	-	26.67	-	31.77	22.45	3.44	49.14	39.83	46.04
22	851 07 A 22.. P _S . 50..	-	26.67	-	34.95	22.45	3.44	52.24	43.03	49.24
24	851 07 A 24.. P _S . 50..	-	26.67	-	38.12	23.30	3.44	55.54	46.18	52.74

Note: all dimensions are in mm