

Revisions

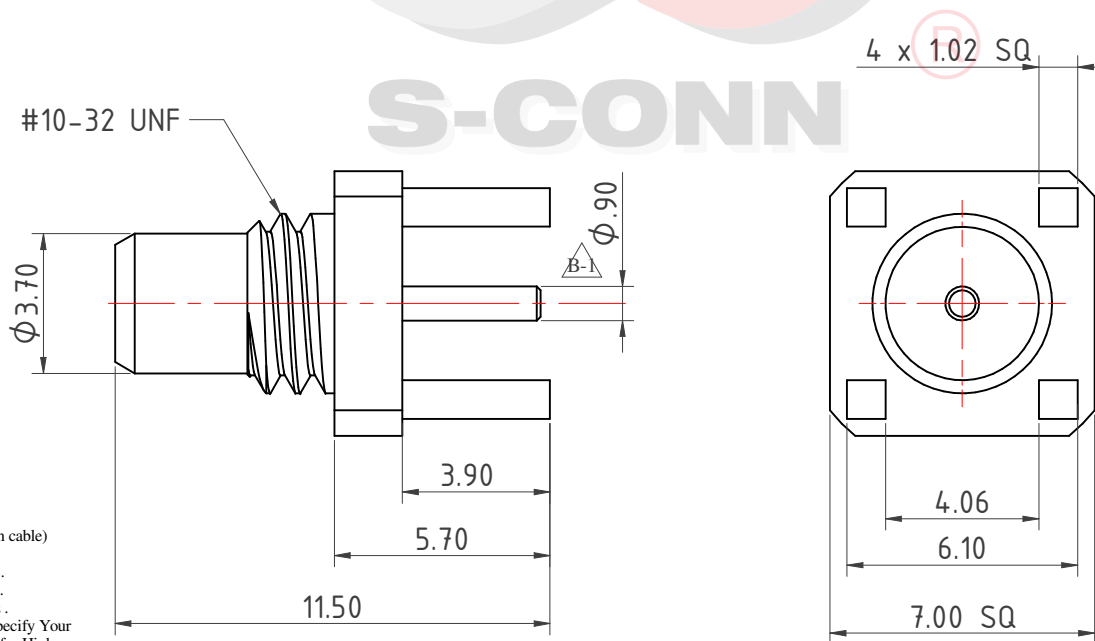
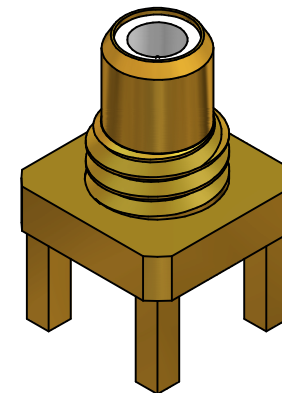
"Note: Revisions B; B-1; B-2..... On Behalf of Official Drawing.
Revisions 1; 2; 3; 4..... On Behalf of Experiment's Drawing."

ISS	Symbol	Explanation	Date
B	△B	Formal Drawing Released.	2018/12/14
B-1	△B-1	CHE DIM fm Ø0.96 to Ø0.9	2019/09/02

Notes :

- Any Electrical, Mechanical or Environmental Test Per MIL-PRF-39012F Should be Spotlighted, as We May Not Have All Testing Equipment to Cover All of It.
- All Metal Materials Are in Compliance with RoHS 2 Directive 2011/65/EU Annex III Section 6 Paragraph.

Outline Drawing



Electrical :

Impedance : 50 ohm
Voltage Rating : 500V rms MIN.(depending on cable)
Insulator Resistance : $\geq 5 \text{ G}\Omega$
Dielectric Withstanding Voltage : 1500 V rms .
Contact Resistance : Center Contact $\leq 1.5 \text{ m}\Omega$
Outer Contact $\leq 1 \text{ m}\Omega$.

**For Commercial Grade Connector, Please Specify Your Electrical Parameter as It May Affect the Cost for Higher Frequency Application.

Mechanical :

Mating : #10-32 UNF Screw Coupling.
Recommended Mating Torque : 0.6~2.5 lbs
Coupling Nut Retention Force : $\geq 101.2 \text{ lbs}$

Environmental :

Temperature Range : -65°C to 165°C
Corrosion (Salt Spray) : MIL-STD-202, Method 101, Cond. B
Thermal Shock : MIL-STD-202, Method 107, Cond. B
Mechanical : MIL-STD-202, Method 213, Cond. C
Vibration : MIL-STD-202, Method 204, Cond. D

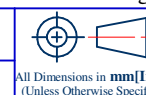
Finish [Unit of Plating Thickness Is in Micro Inch(μ)]

- Nickel Plating Thk. : 80 μ"min. (Under Plating)
- Gold Plating Thk. : 2 μ"max. (Over Finish 1)

3	Inner Contact	Brass	Finish 1/2		
2	Insulator	PTFE	None		
1	Body	Brass	Finish 1/2		
ITEM	Description	Material	Finish	Part Number	QTY

*RoHS and REACH are fully complied to create a greener planet for future generations.

Scale	Abbr.	Date	Rev
NTS	ST	2019/9/2	B-1
Tolerances : .X ± 0.2 .XX ± 0.1 .XXX ± 0.05 Angular : $\pm 1^\circ$			
Drawn	Checked	Approved	
Mark	Mark	S. Sun	
2019/9/2	2019/9/2	2019/9/2	



All Dimensions in mm(Inch)
(Unless Otherwise Specified)



DWG.NO. **SC206A0G01/SE**

Customer P/N:

Title
SMC S/T Jack, PCB Mount Type

S-Conn Enterprise Co., Ltd.

