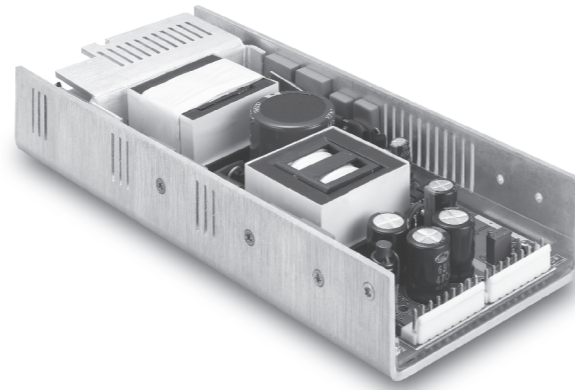


CFM350S

S E R I E S

350 WATT SINGLE OUTPUT AC-DC POWER SUPPLY WITH PFC



Features

- Universal Input: 90~264Vac
- 1U Low Profile
- EMI meets EN55022 Class B
- Active PFC Meets EN61000-3-2
- High Efficiency Up to 90%
- Remote Voltage Sense



MODEL	VOLTAGE OUTPUT	OUTPUT CURRENT (A)		RIPPLE & NOISE ¹	VOLTAGE ACCURACY ²	LINE REG. ³	VOLTAGE ADJ. RANGE	LOAD REG. ⁴	EFFICIENCY (TYPICAL)
		RATED1	RATED2						
CFM350S-120	+12V	29.2	25	150mVp-p	± 2.0%	± 0.5%	10.8 ~ 13.2	± 1%	88%
CFM350S-150	+15V	23.35	20	150mVp-p	± 2.0%	± 0.5%	13.5 ~ 16.5	± 1%	88%
CFM350S-240	+24V	14.6	12.5	150mVp-p	± 2.0%	± 0.5%	21.6 ~ 26.4	± 1%	90%
CFM350S-360	+36V	9.73	8.4	150mVp-p	± 2.0%	± 0.5%	32.4 ~ 39.6	± 1%	90%
CFM350S-480	+48V	7.3	6.3	150mVp-p	± 2.0%	± 0.5%	43.2 ~ 52.8	± 1%	91%

Note: 1. RATED1: 15CFM Air Flow
2. RATED2: Natural Convection

Specifications

INPUT SPECIFICATIONS:

AC Input Voltage.....90 ~ 264Vac
Frequency47 to 63Hz
Inrush Current.....85A max. @230Vac
EMI.....CISPR/FCC Class B
IsolationInput to output = 4242VDC
Leakage Current/240Vac.....2mA max.

OUTPUT SPECIFICATIONS:

Total Rated Output Power.....350W
(with 15CFM air flow or optional fan)
Remote Voltage Sense.....Compensates for wire Voltage drop
Hold-up Time16mS typ.
Over Voltage ProtectionRecycle AC input to restart
Over Temperature ProtectionAuto Recovery
Short Circuit Protection.....Auto Recovery

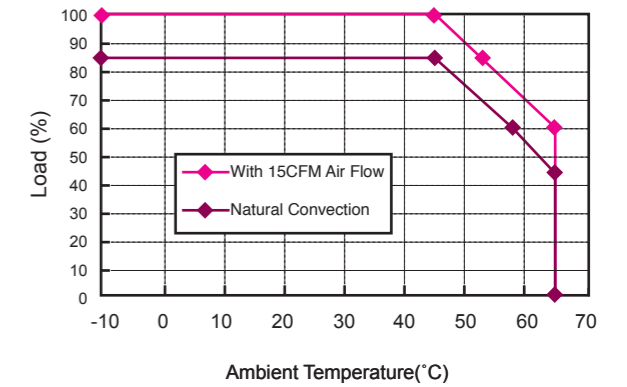
ENVIRONMENTAL CHARACTERISTICS:

Operating Temperature-10 ~ 65°C
45~65°C with 2%/°C Derating
PSU will be in thermal protection for exceeding the rated power output or the operating temperature
Storage Temperature-40 ~ 85°C

MECHANICAL CHARACTERISTICS:

Dimensions9.26x4.00x1.59Inches (235.2x101.6x40.40mm)

CFM350S Series Derating Curve

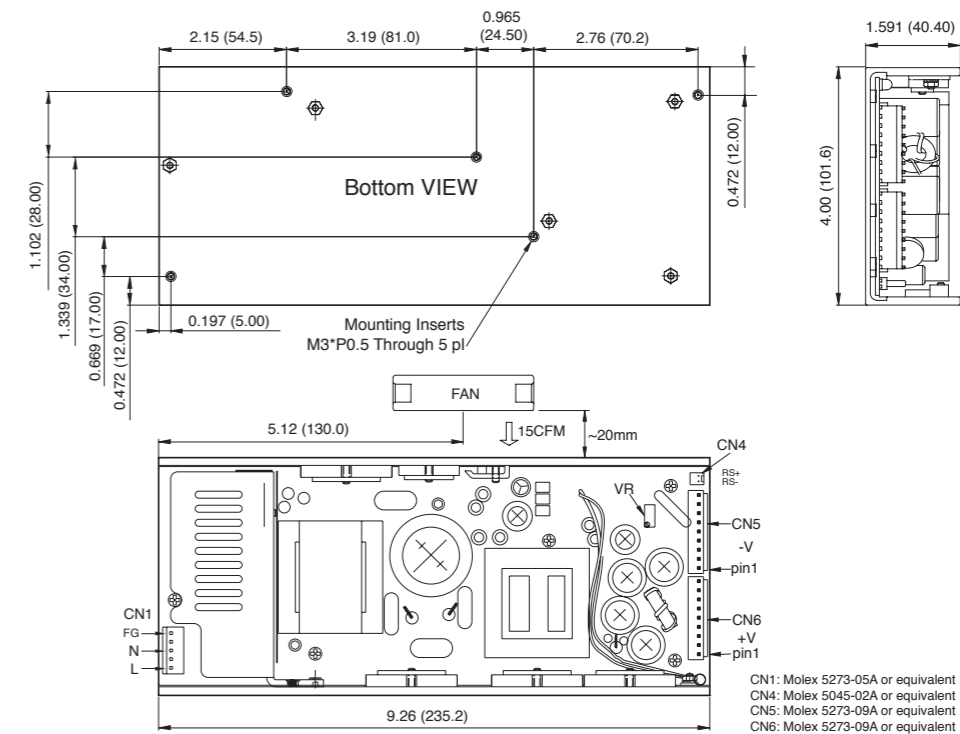


NOTE:

- 1: Add a 0.1uF ceramic capacitor and a 47uF E.L. capacitor to output for Ripple & Noise measuring @20MHz BW.
- 2: Voltage accuracy is set at 60% rated load and 25°C.Ta.
- 3: Line regulation is measured from High Line to Low Line with rated load.
- 4: Load regulation is measured at 60%±40% rated load.

Mechanical Specification

All Dimensions In Inches(mm)
Tolerance Inches: x.xx= ±0.04, x.xxx= ±0.010
Millimeters: x.x= ±1.0, x.xx= ±0.25



Typical at 25°C, nominal line and 60% load, unless otherwise Specified

Mouser Electronics

Authorized Distributor

Click to View Pricing, Inventory, Delivery & Lifecycle Information:

Cincon:

[CFM350S-480](#) [CFM350S-150](#) [CFM350S-240](#) [CFM350S-120](#) [CFM350S-360](#)