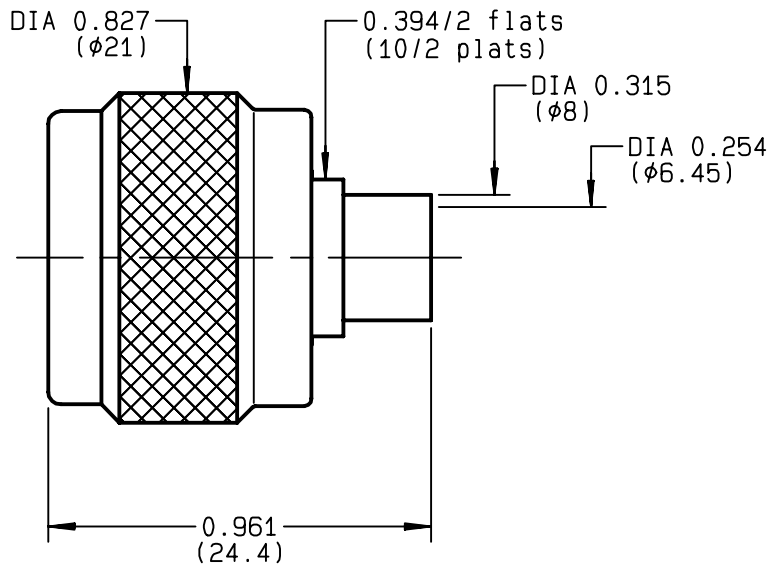


**STRAIGHT PLUG SOLDER TYPE
CABLE .250**

R161.054.000
SERIES N



NOMINAL IMPEDANCE	50 Ω
FREQUENCY RANGE	0-11 GHz
TEMPERATURE RATING	-55/+105 °C
V.S.W.R	1.25 + x F(GHz)Maxi
RF INSERTION LOSS	0.048 √F(GHz) dB Maxi
VOLTAGE RATING	1400 Veff Maxi
DIELECTRIC WITHSTANDING VOLTAGE	2500 Veff Mini
INSULATION RESISTANCE	5000 MΩMini
HERMETIC SEAL	NA Atm.cm ³ /s
LEAKAGE (pressurized only)	NA
MECHANICAL DURABILITY	500 Cycles
WEIGHT	25 gr
SPECIFICATION	

CABLES : KS 3 RG 401
OTHERS CHARACTERISTICS
CABLE RETENTION 500 N Mini
CENTER CONTACT RETENTION
Axial force - mating end NA N Mini
Axial force - opposite end NA N Mini
Torque NA cm.N Mini
RECOMMENDED TORQUES
Mating 130 cm.N
Panel nut NA cm.N
Clamp nut NA cm.N

CONNECTOR PARTS	MATERIALS	FINISH	(all values are given) in micrometers
BODY	BRASS	GOLD 0.2 OVER NICKEL	2
OUTER CONTACT	BRASS	GOLD 0.2 OVER NICKEL	2
CENTER CONTACT	BRASS	GOLD 0.5 OVER NICKEL	2
INSULATOR	PTFE	-	
GASKET	SILICONE RUBBER	-	
OTHERS PIECES	BRASS	BBR	2

ISSUE	CREATION DATE	FILE PART-NUMBER
9834K01	08/02/1993	EPC 96-07



RADIALL®

BONMINI

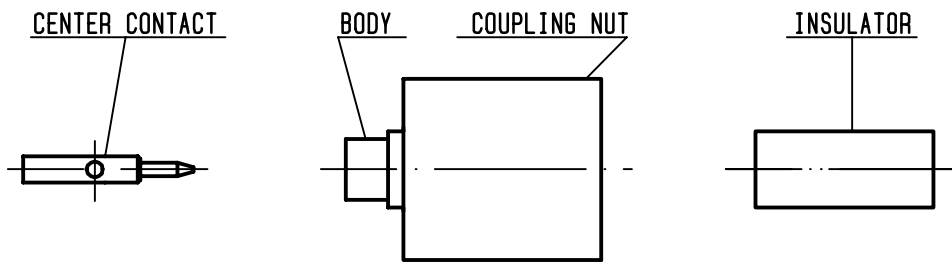
The information given here is subject to change without notice.
Design changes may be in order to improve the product .

Connect to the future



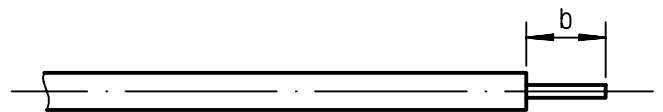
R161.054.000

ISSUE **9834K01** SERIES **N**



①

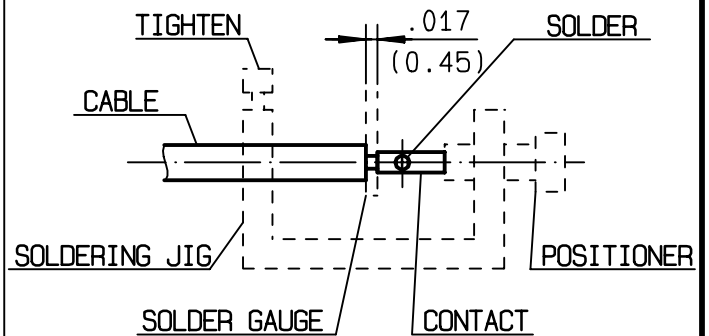
Take the tool kit : R 282 125 010 .
Strip the dielectric of the cable .
Stripping tool cable : R 282 054 .
Trimmer : R 282 074 020 .
Clean the cable .
-



Stripping	a	b	c	d	e
inch	0	0.177 0	0	0	0
mm		4.5			

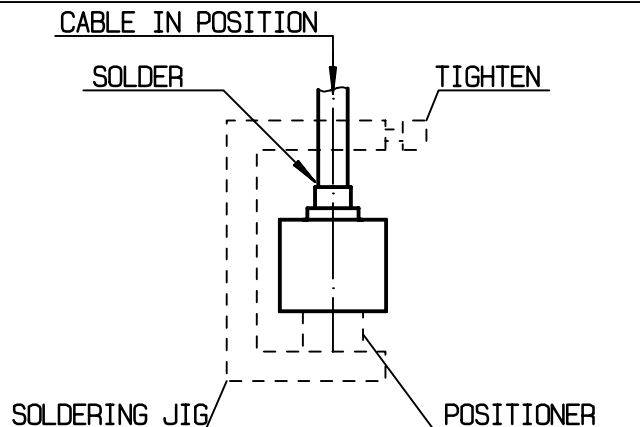
②

Screw the positioner R 282 744 261 onto the soldering jig R 282 740 030 .
Slide contact into positioner .
Insert solder gauge R 282 862 080 between contact and cable .
Tighten and solder the contact .



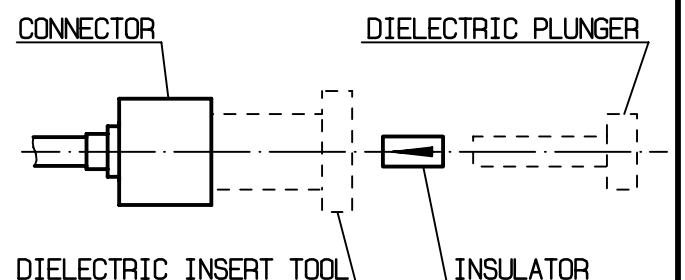
③

After cooling remove cable assembly from the jig .
Screw positioner R 282 744 350 into the connector .
Slide cable into the connector until it bottoms againsts positioner R 282 744 350 .
Tighten .
Put 3 rings of solder around the cable and solder .



④

After cooling remove cable assembly from the jig .
Screw female dielectric insert tool onto connector and cut the excess of dielectric with the dielectric recess tool R282 915 040 .
Insert insulator with the dielectric plunger .
Dielectric insert tool and dielectric plunger : R282 730 160 .



Mouser Electronics

Authorized Distributor

Click to View Pricing, Inventory, Delivery & Lifecycle Information:

[Radial:](#)

[R161054000](#)