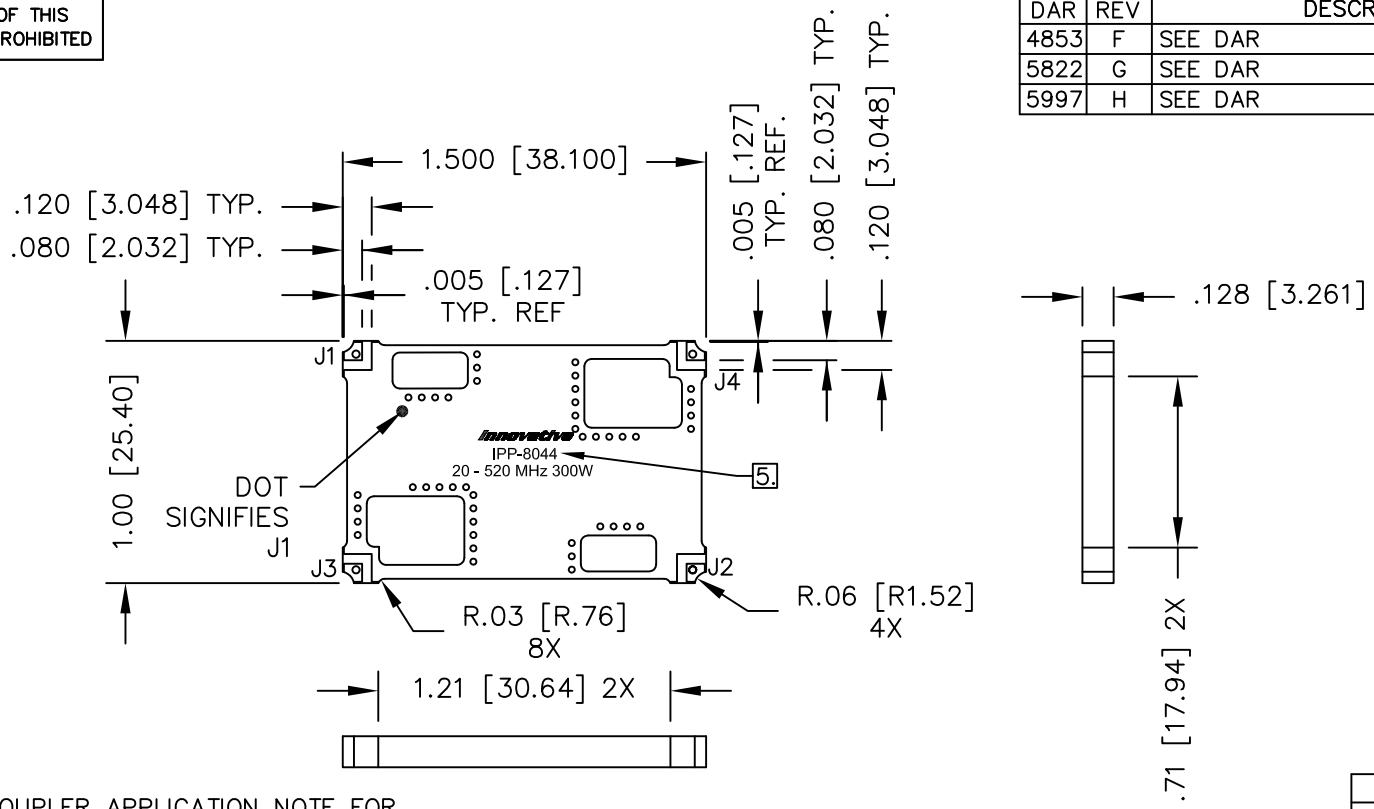


UNAUTHORIZED USE OF THIS  
DRAWING IS STRICTLY PROHIBITED

DAR	REV	DESCRIPTION	APPVD	DATE
4853	F	SEE DAR	DG	3-14
5822	G	SEE DAR	DG	10-15
5997	H	SEE DAR	DG	2-16



- NOTES:**
- SEE SMD COUPLER APPLICATION NOTE FOR FURTHER INFORMATION.
  - PARTS WITH RoHS TIN FINISH ARE RoHS COMPLIANT.
  - AVAILABLE IN TAPE AND REEL. SEE SMD COUPLER APPLICATION NOTE FOR FURTHER INFORMATION.
  - DO NOT EXCEED 220°C WHEN INSTALLING COUPLER.
  - SEE CHART FOR PART NUMBER AND FINISH.

**ELECTRICAL SPECIFICATIONS**

FREQUENCY: 20 - 520 MHz.  
 INSERTION LOSS: <0.25 dB  
 MAIN LINE VSWR: <1.25:1  
 DIRECTIVITY: >20dB  
 COUPLING: 50.0±1dB  
 COUPLED FLATNESS: ±0.6dB  
 POWER: 300 WATT  
 TEMPERATURE: -55°C TO 85°C

FINISH	
P/N	TYPE
IPP-8044	TIN/LEAD
IPP-8044RT	RoHS MATTE TIN

PORT CONFIGURATION			
INPUT	OUTPUT	FORWARD COUPLED	REFLECTED COUPLED
J1	J2	J3	J4
J2	J1	J4	J3

MATERIAL	DWN DG	DATE 11-10	<b>Innovative Power Products</b>	
FINISH SEE FINISH CHART	ENG TJD	DATE 11-10		
TOLERANCE	MANUF	DATE	TITLE OUTLINE	
IN [MM]	CAGE CODE: 437R2		SMD COUPLER, DDC, 20 - 520 MHz. 300W	
.XX ±.02 [.50]	SHEET 1	SCALE 2:1	SIZE B	P/N IPP-8044*
.XXX ±.010 [.254]	OF 1			REV. H
ANG. ±1/2°				