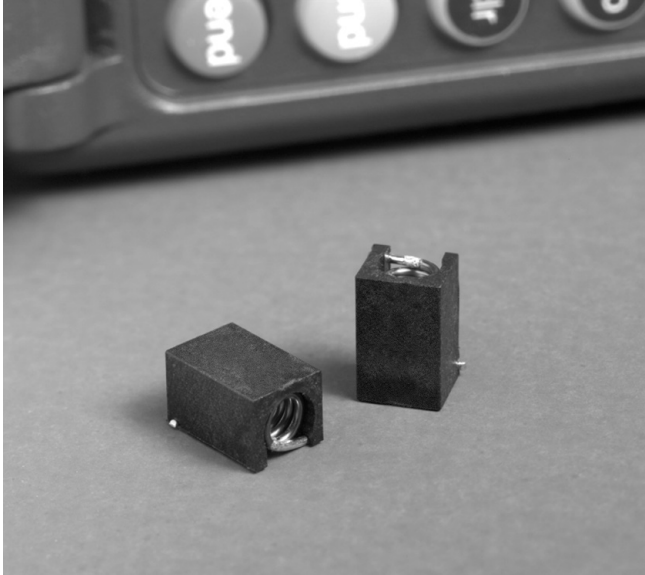


Maxi Spring™ Air Core Inductors



- Air core inductors feature higher Q, L and current ratings
- Rigid package provides a flat surface for pick and place
- Leads are locked in position for precise terminal spacing

Weight 0.42 – 0.59 g

Terminations RoHS compliant tin-silver (96.5/3.5) over copper. Other terminations available at additional cost.

Ambient temperature –40°C to +125°C with Irms current

Maximum part temperature +140°C (ambient + temp rise)

Storage temperature Component: –40°C to +140°C.
Tape and reel packaging: –40°C to +80°C

Resistance to soldering heat Max three 40 second reflows at +260°C, parts cooled to room temperature between cycles

Temperature Coefficient of Inductance (TCL) +5 to +70 ppm/°C

Moisture Sensitivity Level (MSL) 1 (unlimited floor life at <30°C / 85% relative humidity)

Failures in Time (FIT) / Mean Time Between Failures (MTBF)

One per billion hours / one billion hours, calculated per Telcordia SR-332

Packaging 800/13" reel Plastic tape: 24 mm wide, 0.3 mm thick, 12 mm pocket spacing, 6.1 mm pocket depth

PCB washing Tested to MIL-STD-202 Method 215 plus an additional aqueous wash. See [Doc787_PCB_Washing.pdf](#).

Part number ¹	Turns	Inductance ² (nH)	Percent tolerance ³	Q ² typ	Q ² min	Test freq. (MHz)	SRF min ⁴ (GHz)	DCR max ⁵ (mOhm)	Irms ⁶ (A)
132-09SM_L_	9	90	5,2	114	95	50	1.140	15	3.5
132-10SM_L_	10	111	5,2	104	87	50	1.020	15	3.5
132-11SM_L_	11	130	5,2	104	87	50	0.900	20	3.0
132-12SM_L_	12	169	5,2	114	95	50	0.875	25	3.0
132-13SM_L_	13	206	5,2	114	95	50	0.800	30	3.0
132-14SM_L_	14	222	5,2	110	92	50	0.730	35	3.0
132-15SM_L_	15	246	5,2	114	95	50	0.685	35	3.0
132-16SM_L_	16	307	5,2	114	95	50	0.660	35	3.0
132-17SM_L_	17	380	5,2	114	95	50	0.590	50	2.5
132-18SM_L_	18	422	5,2	114	95	50	0.540	60	2.5
132-19SM_L_	19	491	5,2	114	95	50	0.535	65	2.0
132-20SM_L_	20	538	5,2	104	87	50	0.490	90	2.0

1. When ordering, specify **tolerance, termination and packaging** codes:

132-20SMGLD

Termination: L = RoHS compliant tin-silver (96.5/3.5) over copper.
Special order: T = RoHS tin-silver-copper (95.5/4/0.5) or S = non-RoHS tin-lead (63/37).

Tolerance: G = 2% J = 5%

Packaging: D = 13" machine-ready reel. EIA-481 embossed plastic tape (800 parts per full reel).

B = Less than full reel. In tape, but not machine-ready. To have a leader and trailer added (\$25 charge), use code letter D instead.

2. Inductance and Q tested at 50 MHz on an Agilent/HP 4291A with a 16193 fixture and correlation.

3. Tolerances in bold are stocked for immediate shipment.

4. SRF tested on the Agilent/HP 8753D and a Coilcraft CCF1248 test fixture.

5. DCR tested on the Cambridge Technology Model 510 Micro Ohmmeter.

6. Current that causes a 15°C temperature rise from 25°C ambient. This information is for reference only and does not represent absolute maximum ratings.

7. Electrical specifications at 25°C.

Refer to Doc 362 "Soldering Surface Mount Components" before soldering.

S-Parameter files
ON OUR WEB SITE

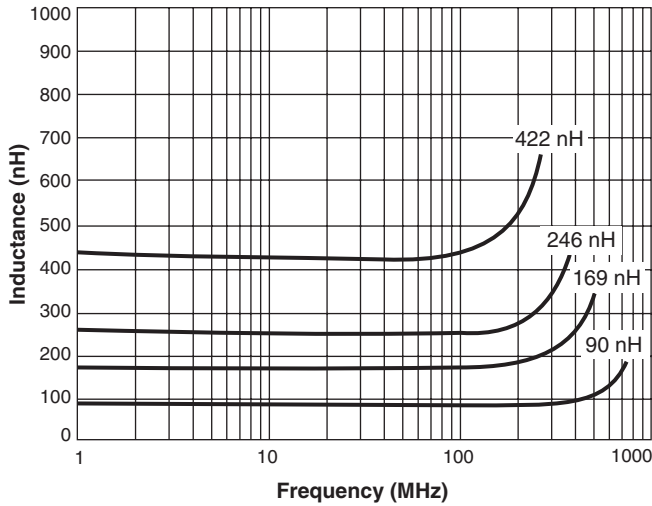
SPICE models
ON OUR WEB SITE

Designer's Kit C319 contains 8 each of all 5% values.
 Designer's Kit C319-2 contains 8 each of all 2% values.

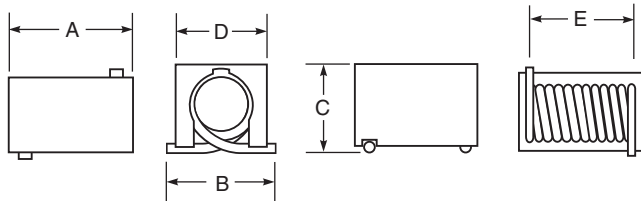
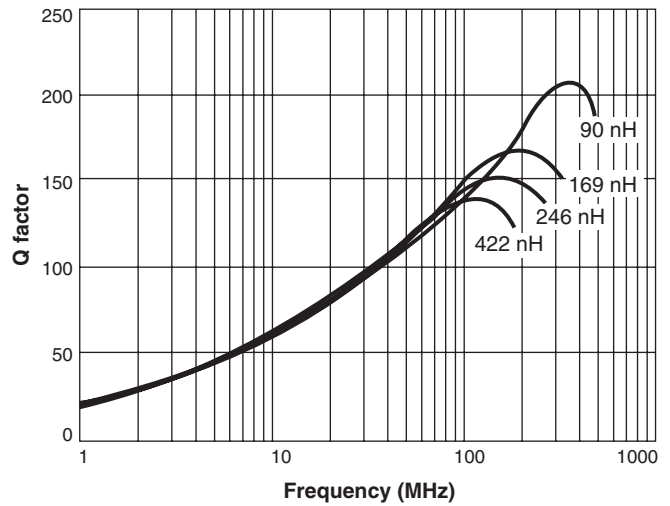


Maxi Spring™ Air Core Inductors

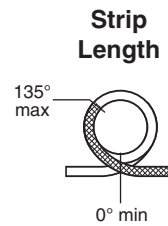
Typical L vs Frequency



Typical Q vs Frequency

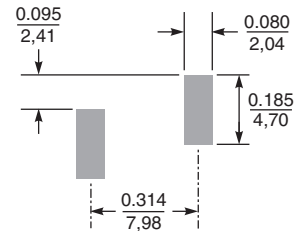


A max	B max	C max	D	E	
0.415	0.260	0.235	0.240 ±0.015	0.314 ±0.020	inches
10,55	6,60	5,97	6,10 ±0,38	7,98 ±0,51	mm



Dimensions are in $\frac{\text{inches}}{\text{mm}}$

Recommended Land Pattern



Mouser Electronics

Authorized Distributor

Click to View Pricing, Inventory, Delivery & Lifecycle Information:

Coilcraft:

[132-13SMGLD](#) [132-19SMJLD](#) [132-11SMGLD](#) [132-14SMGLB](#) [132-10SMGLB](#) [132-10SMJLD](#) [132-12SMJLB](#) [132-18SMJLB](#) [132-14SMJLD](#) [132-11SMJLD](#) [132-09SMGLD](#) [132-18SMGLD](#) [132-20SMGLD](#) [132-09SMJLD](#) [132-17SMGLD](#) [132-16SMGLD](#) [132-18SMGLB](#) [132-20SMJLB](#) [132-19SMGLB](#) [132-15SMJLB](#) [132-13SMGLB](#) [132-12SMJLD](#) [132-09SMJLB](#) [132-14SMGLD](#) [132-15SMGLB](#) [132-12SMGLB](#) [132-10SMGLD](#) [132-13SMJLD](#) [132-10SMJLB](#) [132-11SMJLB](#) [132-19SMJLB](#) [132-19SMGLD](#) [132-16SMGLB](#) [132-09SMGLB](#) [132-11SMGLB](#) [132-15SMJLD](#) [132-20SMJLD](#) [132-14SMJLB](#) [132-12SMGLD](#) [132-17SMGLB](#) [132-18SMJLD](#) [132-13SMJLB](#) [132-16SMJLB](#) [132-20SMGLB](#) [132-17SMJLB](#) [132-17SMJLD](#) [132-16SMJLD](#) [132-15SMGLD](#)